

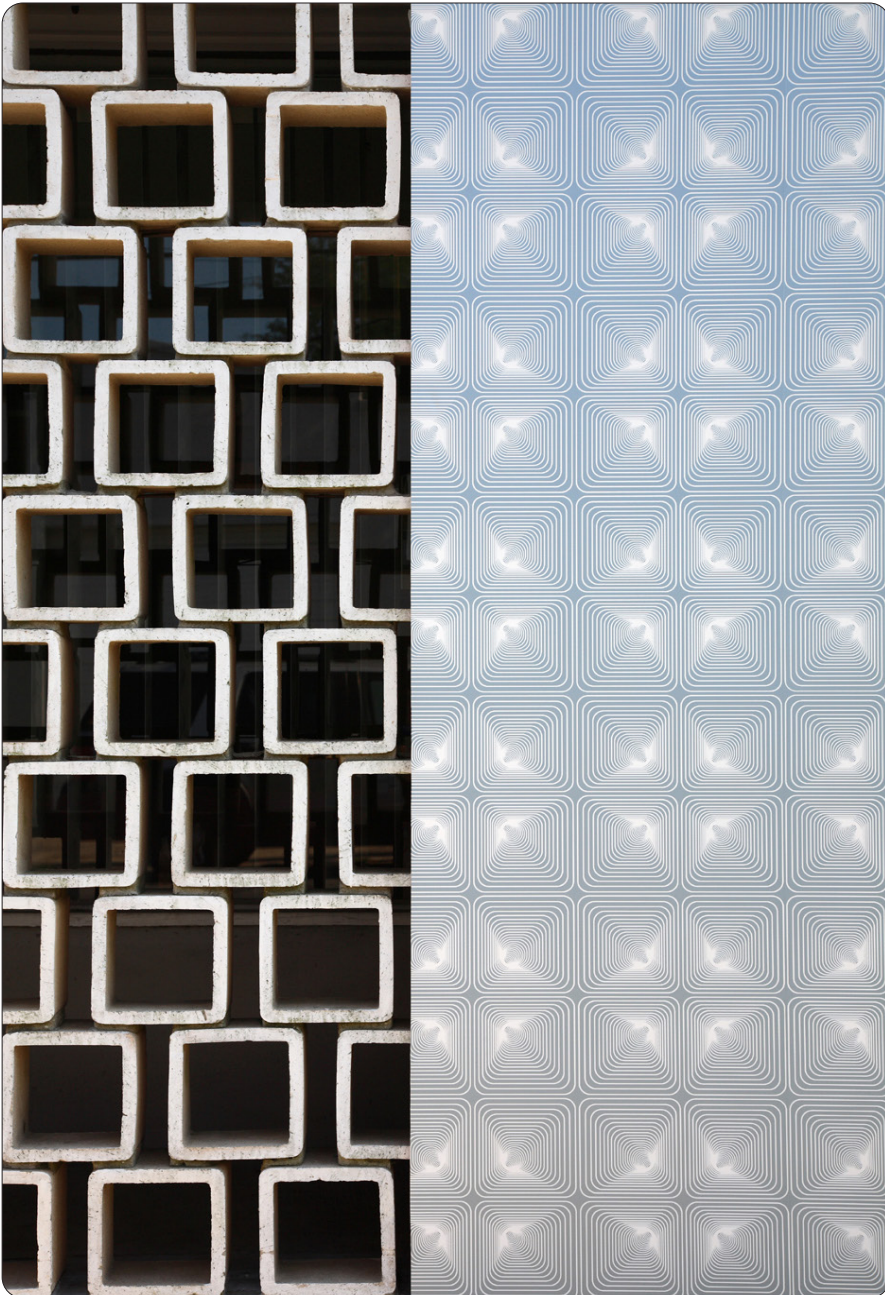


FLAVOR PAPER

sales@flavorpaper.com | flavorpaper.com

TUNNEL VISION

by Josh Minnie



As you can see, Tunnel Vision draws you in...yet the best view might be few paces back. This pattern goes in deep for the visual effects and works best when the ink is darker than the ground. The design does equally well on matte paper (like Dolphin on Ivory) or with a reflective mylar ground for maximum optical impact.

SPECS

ROLL SIZE ————— 27" W x 180" L
PATTERN REPEAT ————— 13.81" / 35.08cm
SIDE TO SIDE MATCH ——— STRAIGHT ACROSS
MADE TO ORDER IN USA

LEARN MORE!



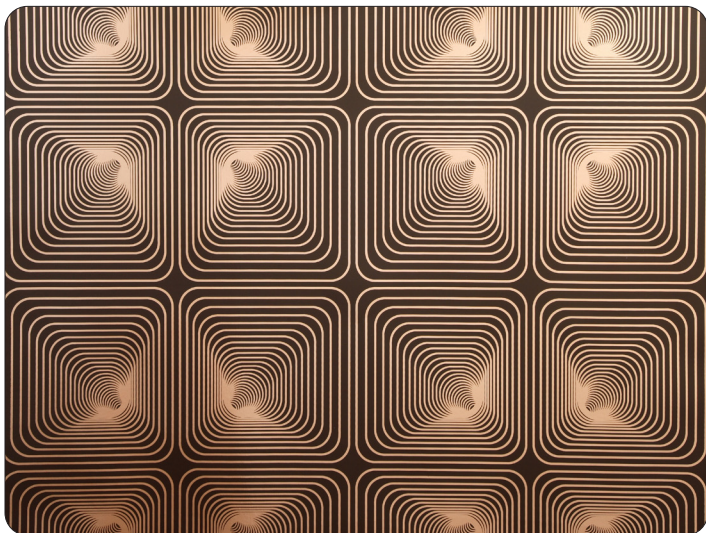


FLAVOR PAPER

sales@flavorpaper.com | flavorpaper.com

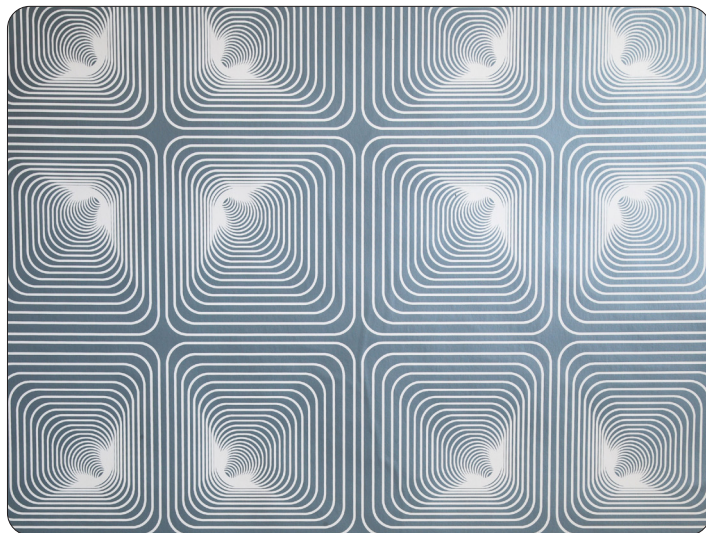
TUNNEL VISION

by Josh Minnie



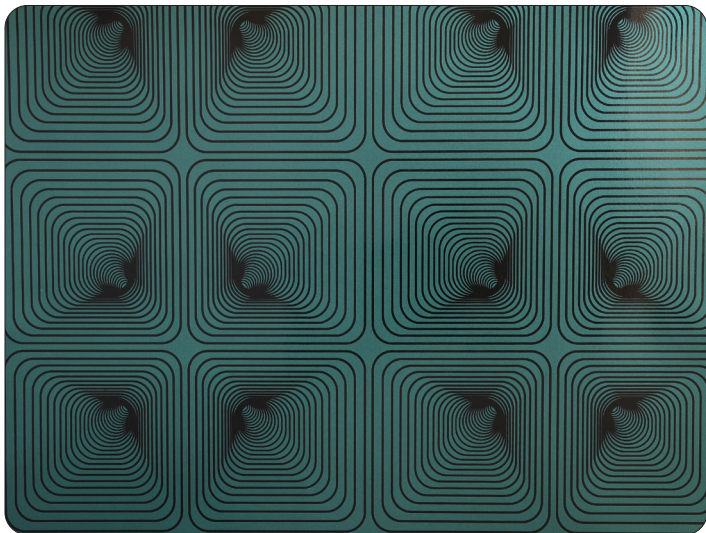
COFFEE BEAN

- PRINTING METHOD: HANDSCREEN
- GROUND: TYPE I CHAMPAGNE MYLAR
- BACKING: NONWOVEN FIBER
- WEIGHT: 0.78 oz/sqft
- FIRE RATING: CLASS A, AS PER ASTM E 84 (ADHERED)
- FLAME SPREAD/SMOKE DEVELOPED: 15/205
- ECO: PRINTED WITH WATER BASED INKS (LATEX OR ECO-SOLVENT)
- INSTALLATION: COMES UNTRIMMED | PRO INSTALL RECOMMENDED



DOLPHIN

- PRINTING METHOD: HANDSCREEN
- GROUND: TYPE I CLAY COATED IVORY
- BACKING: NONWOVEN FIBER
- WEIGHT: 0.78 oz/sqft
- FIRE RATING: CLASS A, AS PER ASTM E 84 (ADHERED)
- FLAME SPREAD/SMOKE DEVELOPED: 15/205
- ECO: PRINTED WITH WATER BASED INKS (LATEX OR ECO-SOLVENT)
- INSTALLATION: COMES UNTRIMMED | PRO INSTALL RECOMMENDED



PEACOCK

- PRINTING METHOD: HANDSCREEN
- GROUND: TYPE I BLACK MYLAR
- BACKING: NONWOVEN FIBER
- WEIGHT: 0.78 oz/sqft
- FIRE RATING: CLASS A, AS PER ASTM E 84 (ADHERED)
- FLAME SPREAD/SMOKE DEVELOPED: 15/205
- ECO: PRINTED WITH WATER BASED INKS (LATEX OR ECO-SOLVENT)
- INSTALLATION: COMES UNTRIMMED | PRO INSTALL RECOMMENDED



ROBINS EGG

- PRINTING METHOD: HANDSCREEN
- GROUND: TYPE I CHROME MYLAR
- BACKING: NONWOVEN FIBER
- WEIGHT: 0.78 oz/sqft
- FIRE RATING: CLASS A, AS PER ASTM E 84 (ADHERED)
- FLAME SPREAD/SMOKE DEVELOPED: 15/205
- ECO: PRINTED WITH WATER BASED INKS (LATEX OR ECO-SOLVENT)
- INSTALLATION: COMES UNTRIMMED | PRO INSTALL RECOMMENDED