

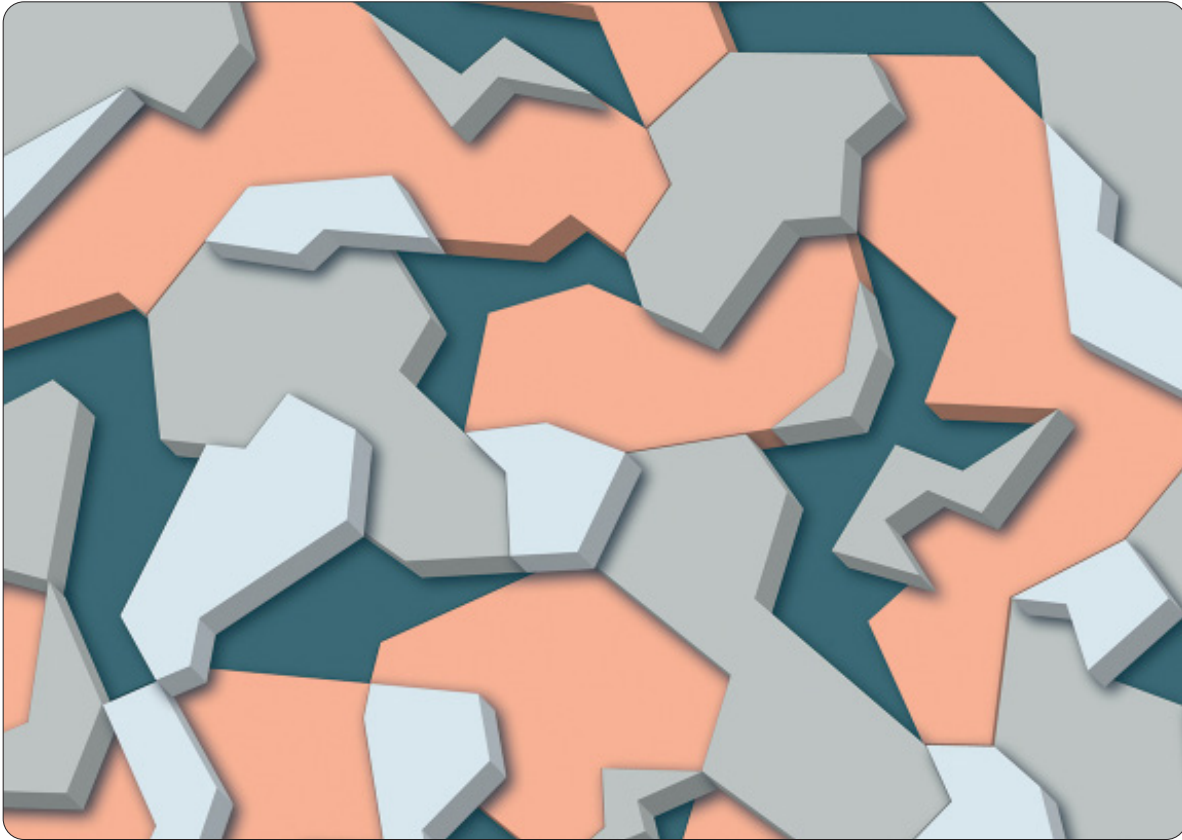


FLAVOR PAPER

sales@flavorpaper.com | flavorpaper.com

SUBDUCTION

by Josh Minnie



Geometric splinter camouflage and 3-D vector graphics come together to mimic subduction zones in the Earth's tectonic plates. Designed as a large scale expandable mural, this amplified modern camo accomplishes the mission, whether it's to conceal or draw the eye. Just like its traditional camo counterpart, Subduction will break up the bland, adding dimension and depth to a space where there was none before. You can customize colors to suit any environment. This is a non-repeating mural and is scaled and cropped based on the provided wall dimensions.

LEARN MORE!



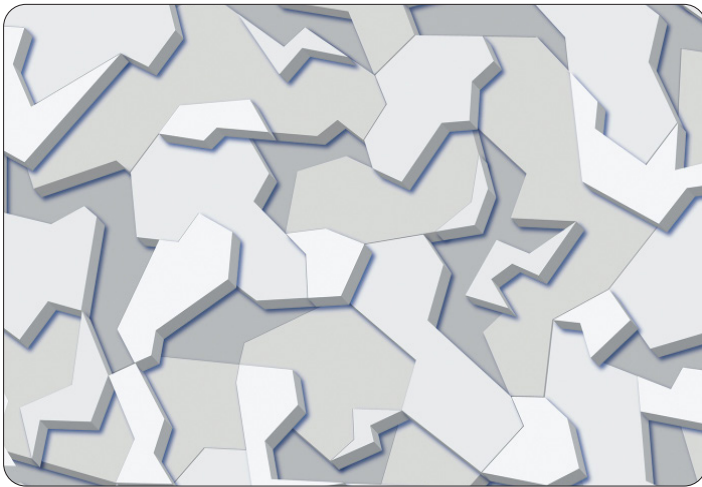


FLAVOR PAPER

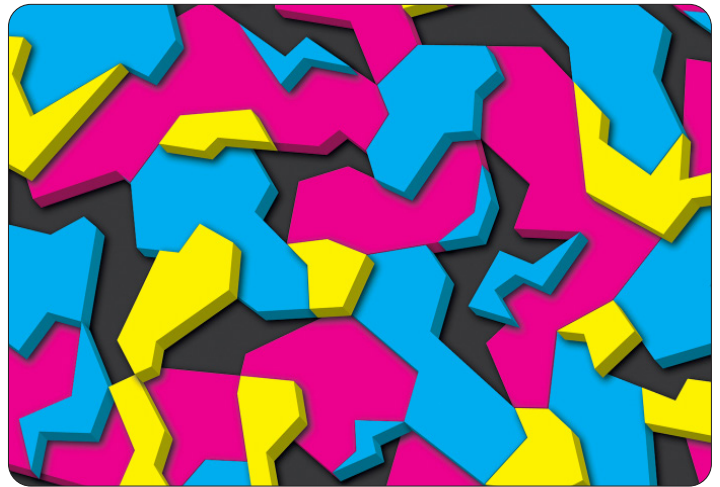
sales@flavorpaper.com | flavorpaper.com

SUBDUCTION

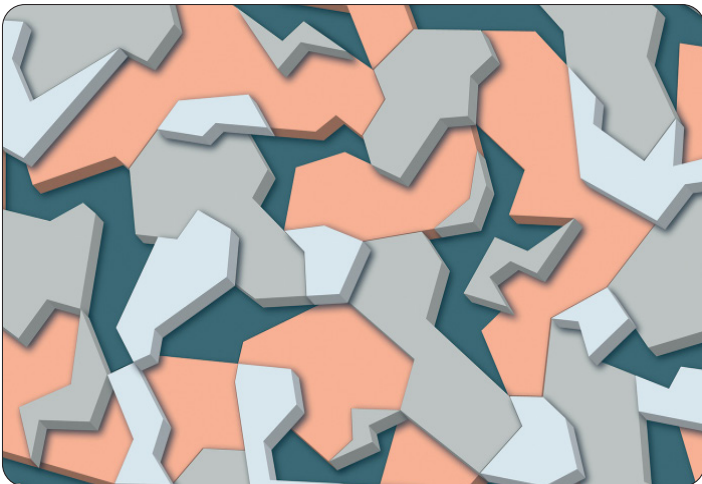
by Josh Minnie



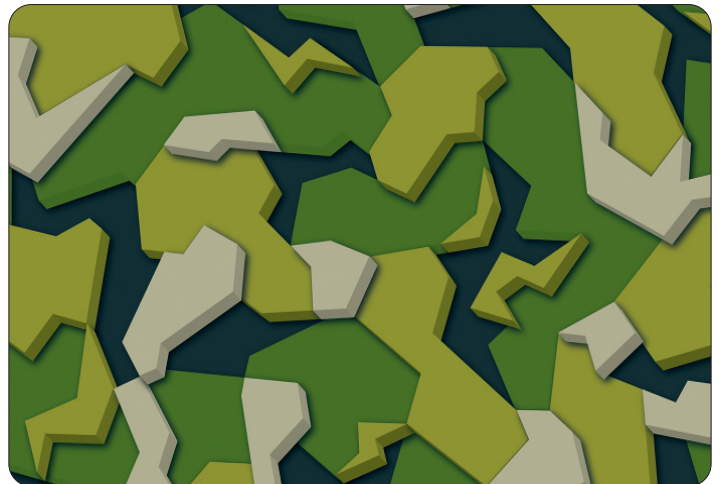
ARTIC



CMYK



DUSK



FOREST

GROUND MENU

TYPE I ECO SMOOTH MATTE

- PRINTING METHOD: DIGITAL
- BACKING: NONWOVEN FIBER
- WEIGHT: 14 OZ/LINEAL YARD
- FIRE RATING: CLASS A, AS PER ASTM E 84 (ADHERED)
- FLAME SPREAD/SMOKE DEVELOPED: 15/205
- ECO: NO OZONE DEPLETING CHEMICALS
- INSTALLATION: UNTRIMMED | PRO INSTALL RECOMMENDED

TYPE II ECO TEXTURED MATTE

- PRINTING METHOD: DIGITAL
- BACKING: OSNABURG
- WEIGHT: 20 OZ/LINEAL YARD
- FIRE RATING: CLASS A, AS PER ASTM E 84 (ADHERED)
- FLAME SPREAD/SMOKE DEVELOPED: 15/205
- ECO: MINIMUM 31% POST-CONSUMER CONTENT
- INSTALLATION: UNTRIMMED | PRO INSTALL RECOMMENDED