



FLAVOR PAPER

sales@flavorpaper.com | flavorpaper.com

ROCK CANDY

by Amanda Wachob



To say this design rocks is a massive understatement, as each colorway contains real deal crystal powders mixed into the ink that take effect on subtle etheric levels to inspire and soothe spaces and senses! Seriously, the invigorating ingredients include Aquamarine, Fluorite, Pallasite Meteorite, Rose Quartz, Pyrite and Black Tourmaline.

Dreamed up by Amanda Wachob – a multidisciplinary artist who’s known globally for her innovative and conceptual work with the tattoo medium – Rock Candy features drips and splatters often seen in her body art, and is holistically inspired by the 9,000lb. amethyst at the American Museum of Natural History in NYC. This sublime, Flavor is designed to make you feel as though you are stepping into a giant sparkly geode...and then transported to another world where woosah reigns supreme. Good vibes only!

SPECS

ROLL SIZE ————— 27" W x 180" L
PATTERN REPEAT ————— 60.39" /153.39cm
SIDE TO SIDE MATCH ——— RANDOM
MADE TO ORDER IN USA

LEARN MORE!





FLAVOR PAPER

sales@flavorpaper.com | flavorpaper.com

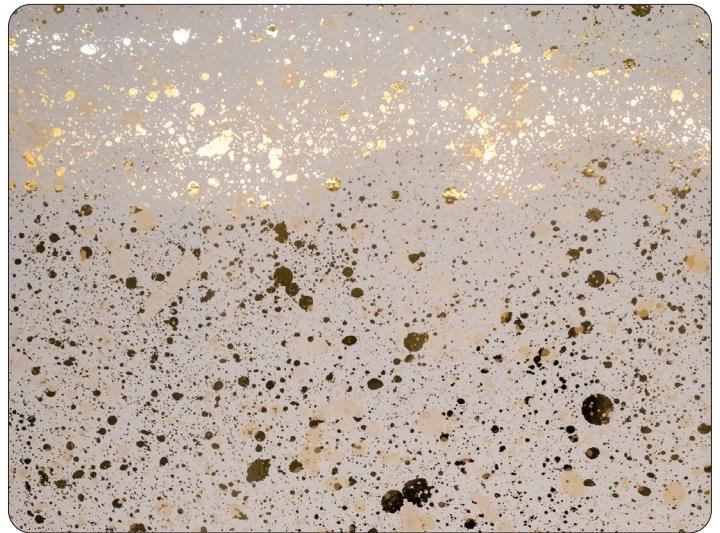
ROCK CANDY

by Amanda Wachob



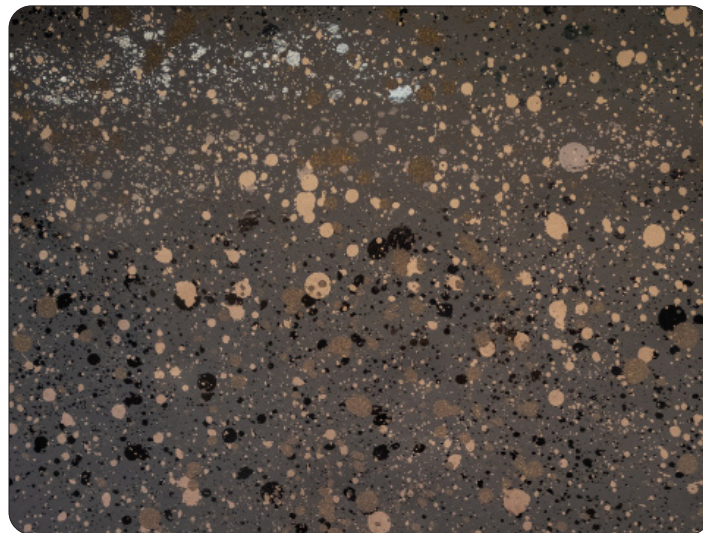
AURA FLUORITE

- PRINTING METHOD: HANDSCREEN
- GROUND: TYPE I HOLOGRAPHIC MYLAR
- BACKING: NONWOVEN FIBER
- WEIGHT: 0.78 oz/sqft
- FIRE RATING: CLASS A, AS PER ASTM E 84 (ADHERED)
- FLAME SPREAD/SMOKE DEVELOPED: 15/205
- ECO: PRINTED WITH WATER BASED INKS (LATEX OR ECO-SOLVENT)
- INSTALLATION: COMES UNTRIMMED | PRO INSTALL RECOMMENDED



METEORITE

- PRINTING METHOD: HANDSCREEN
- GROUND: TYPE I BRIGHT GOLD MYLAR
- BACKING: NONWOVEN FIBER
- WEIGHT: 0.78 oz/sqft
- FIRE RATING: CLASS A, AS PER ASTM E 84 (ADHERED)
- FLAME SPREAD/SMOKE DEVELOPED: 15/205
- ECO: PRINTED WITH WATER BASED INKS (LATEX OR ECO-SOLVENT)
- INSTALLATION: COMES UNTRIMMED | PRO INSTALL RECOMMENDED



PYRITE

- PRINTING METHOD: HANDSCREEN
- GROUND: TYPE I BLACK MYLAR
- BACKING: NONWOVEN FIBER
- WEIGHT: 0.78 oz/sqft
- FIRE RATING: CLASS A, AS PER ASTM E 84 (ADHERED)
- FLAME SPREAD/SMOKE DEVELOPED: 15/205
- ECO: PRINTED WITH WATER BASED INKS (LATEX OR ECO-SOLVENT)
- INSTALLATION: COMES UNTRIMMED | PRO INSTALL RECOMMENDED