

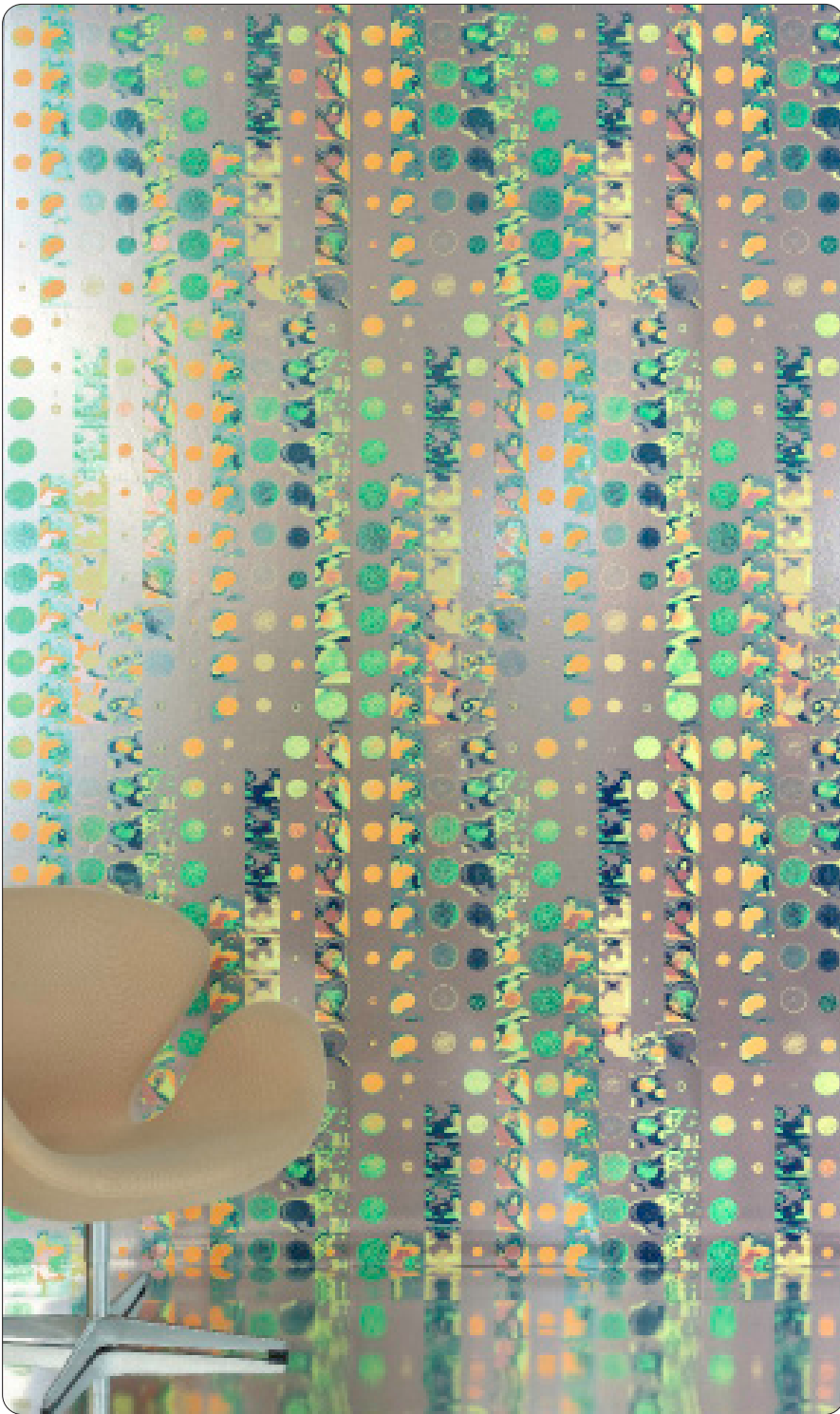


FLAVOR PAPER

sales@flavorpaper.com | flavorpaper.com

PERMANENT SUNSET

by Liz Collins



It's hard not to crush on Brooklyn-based fibers fine artist Liz Collins' work. Liz uniquely recreates her experience of the world as a place of stupendous wonder and cosmic energy with vivid palettes, dynamic patterning and intoxicating wit. Inspired by stills from the edgy 1982 cult classic film *Liquid Sky* – which zeroes in on the subculture of downtown New York's club scene in the early New Wave era – Permanent Sunset creatively captures the pleasure centers of our brains as they played a prominent part in the film's story and art direction. Offered in a range from far out to more calming magic-hour hues, this handscreened print allowed us to further flex our color capabilities with transparent inks and duochrome powders to create colorways that are truly dynamic and full of depth. It's pure alternate dimension eye candy.

SPECS

ROLL SIZE ————— 27" W x 180" L

PATTERN REPEAT ————— 59" /149.86cm

SIDE TO SIDE MATCH ——— RANDOM

MADE TO ORDER IN USA

LEARN MORE!



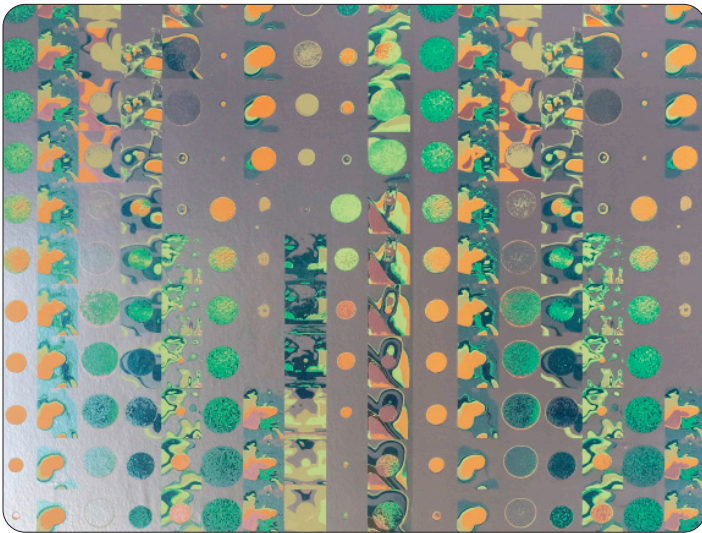


FLAVOR PAPER

sales@flavorpaper.com | flavorpaper.com

PERMANENT SUNSET

by Liz Collins

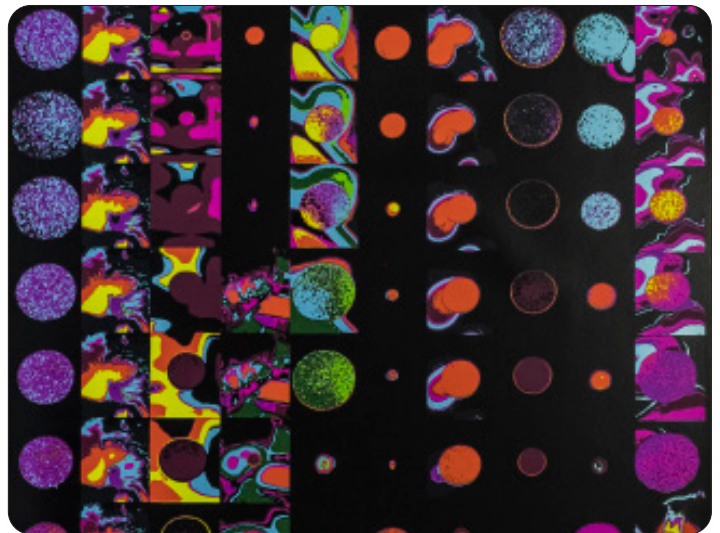
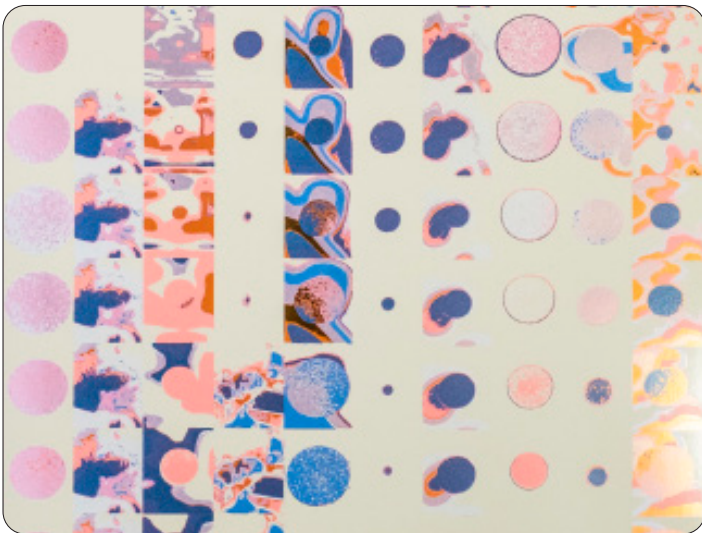


MIAMI NICE

- PRINTING METHOD: HANDSCREEN
- GROUND: TYPE I CHROME MYLAR
- BACKING: NONWOVEN FIBER
- WEIGHT: 0.78 oz/sqft
- FIRE RATING: CLASS A, AS PER ASTM E 84 (ADHERED)
- FLAME SPREAD/SMOKE DEVELOPED: 15/205
- ECO: PRINTED WITH WATER BASED INKS (LATEX OR ECO-SOLVENT)
- INSTALLATION: COMES UNTRIMMED | PRO INSTALL RECOMMENDED

OVER EASY

- PRINTING METHOD: HANDSCREEN
- GROUND: TYPE I BRIGHT GOLD MYLAR
- BACKING: NONWOVEN FIBER
- WEIGHT: 0.78 oz/sqft
- FIRE RATING: CLASS A, AS PER ASTM E 84 (ADHERED)
- FLAME SPREAD/SMOKE DEVELOPED: 15/205
- ECO: PRINTED WITH WATER BASED INKS (LATEX OR ECO-SOLVENT)
- INSTALLATION: COMES UNTRIMMED | PRO INSTALL RECOMMENDED



PANSY

- PRINTING METHOD: HANDSCREEN
- GROUND: TYPE I COPPER MYLAR
- BACKING: NONWOVEN FIBER
- WEIGHT: 0.78 oz/sqft
- FIRE RATING: CLASS A, AS PER ASTM E 84 (ADHERED)
- FLAME SPREAD/SMOKE DEVELOPED: 15/205
- ECO: PRINTED WITH WATER BASED INKS (LATEX OR ECO-SOLVENT)
- INSTALLATION: COMES UNTRIMMED | PRO INSTALL RECOMMENDED

SPENCERS

- PRINTING METHOD: HANDSCREEN
- GROUND: TYPE I CHROME MYLAR
- BACKING: NONWOVEN FIBER
- WEIGHT: 0.78 oz/sqft
- FIRE RATING: CLASS A, AS PER ASTM E 84 (ADHERED)
- FLAME SPREAD/SMOKE DEVELOPED: 15/205
- ECO: PRINTED WITH WATER BASED INKS (LATEX OR ECO-SOLVENT)
- INSTALLATION: COMES UNTRIMMED | PRO INSTALL RECOMMENDED