



FLAVOR PAPER

sales@flavorpaper.com | flavorpaper.com

ONDA

by Flavor Paper



This Ted original rides inspiration from “The Great Wave off Kanagawa”, a woodblock print by the Japanese artist Hokusai from the early 1830’s. The scale brings this most traditional of prints to another level on the wall. The full wave is four and a half feet wide and never ends. A truly amazing and dynamic hand-screened work of art.

## SPECS

ROLL SIZE ————— 27” W x 180” L  
PATTERN REPEAT ————— 54.56” /138.58cm  
SIDE TO SIDE MATCH ——— HALF DROP  
MADE TO ORDER IN USA

LEARN MORE!





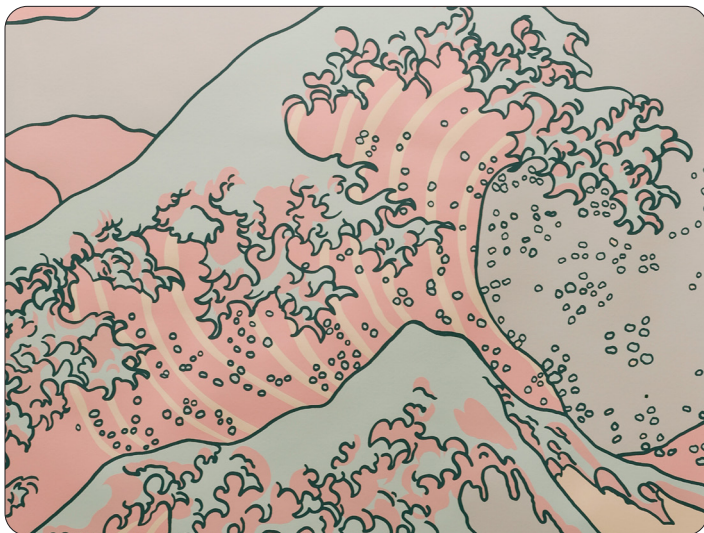


FLAVOR PAPER

sales@flavorpaper.com | flavorpaper.com

ONDA

by Flavor Paper



## CANDY CREST

- PRINTING METHOD: HANDSCREEN
- GROUND: TYPE I CLAY COATED BLUSH
- BACKING: NONWOVEN FIBER
- WEIGHT: 0.78 oz/sqft
- FIRE RATING: CLASS A, AS PER ASTM E 84 (ADHERED)
- FLAME SPREAD/SMOKE DEVELOPED: 15/205
- ECO: PRINTED WITH WATER BASED INKS (LATEX OR ECO-SOLVENT)
- INSTALLATION: COMES UNTRIMMED | PRO INSTALL RECOMMENDED



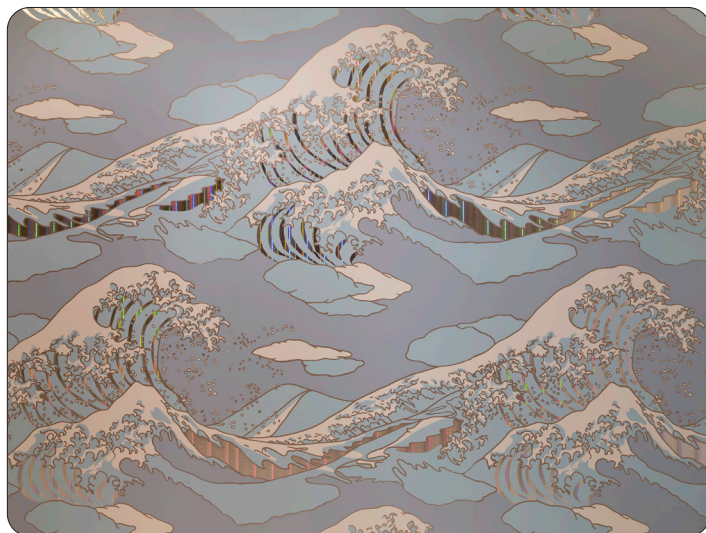
## FROTH

- PRINTING METHOD: HANDSCREEN
- GROUND: TYPE I CHROME MYLAR
- BACKING: NONWOVEN FIBER
- WEIGHT: 0.78 oz/sqft
- FIRE RATING: CLASS A, AS PER ASTM E 84 (ADHERED)
- FLAME SPREAD/SMOKE DEVELOPED: 15/205
- ECO: PRINTED WITH WATER BASED INKS (LATEX OR ECO-SOLVENT)
- INSTALLATION: COMES UNTRIMMED | PRO INSTALL RECOMMENDED



## SALTWATER TAFFY

- PRINTING METHOD: HANDSCREEN
- GROUND: TYPE I CHROME MYLAR
- BACKING: NONWOVEN FIBER
- WEIGHT: 0.78 oz/sqft
- FIRE RATING: CLASS A, AS PER ASTM E 84 (ADHERED)
- FLAME SPREAD/SMOKE DEVELOPED: 15/205
- ECO: PRINTED WITH WATER BASED INKS (LATEX OR ECO-SOLVENT)
- INSTALLATION: COMES UNTRIMMED | PRO INSTALL RECOMMENDED



## SUDSY

- PRINTING METHOD: HANDSCREEN
- GROUND: TYPE I HOLOGRAPHIC MYLAR
- BACKING: NONWOVEN FIBER
- WEIGHT: 0.78 oz/sqft
- FIRE RATING: CLASS A, AS PER ASTM E 84 (ADHERED)
- FLAME SPREAD/SMOKE DEVELOPED: 15/205
- ECO: PRINTED WITH WATER BASED INKS (LATEX OR ECO-SOLVENT)
- INSTALLATION: COMES UNTRIMMED | PRO INSTALL RECOMMENDED