

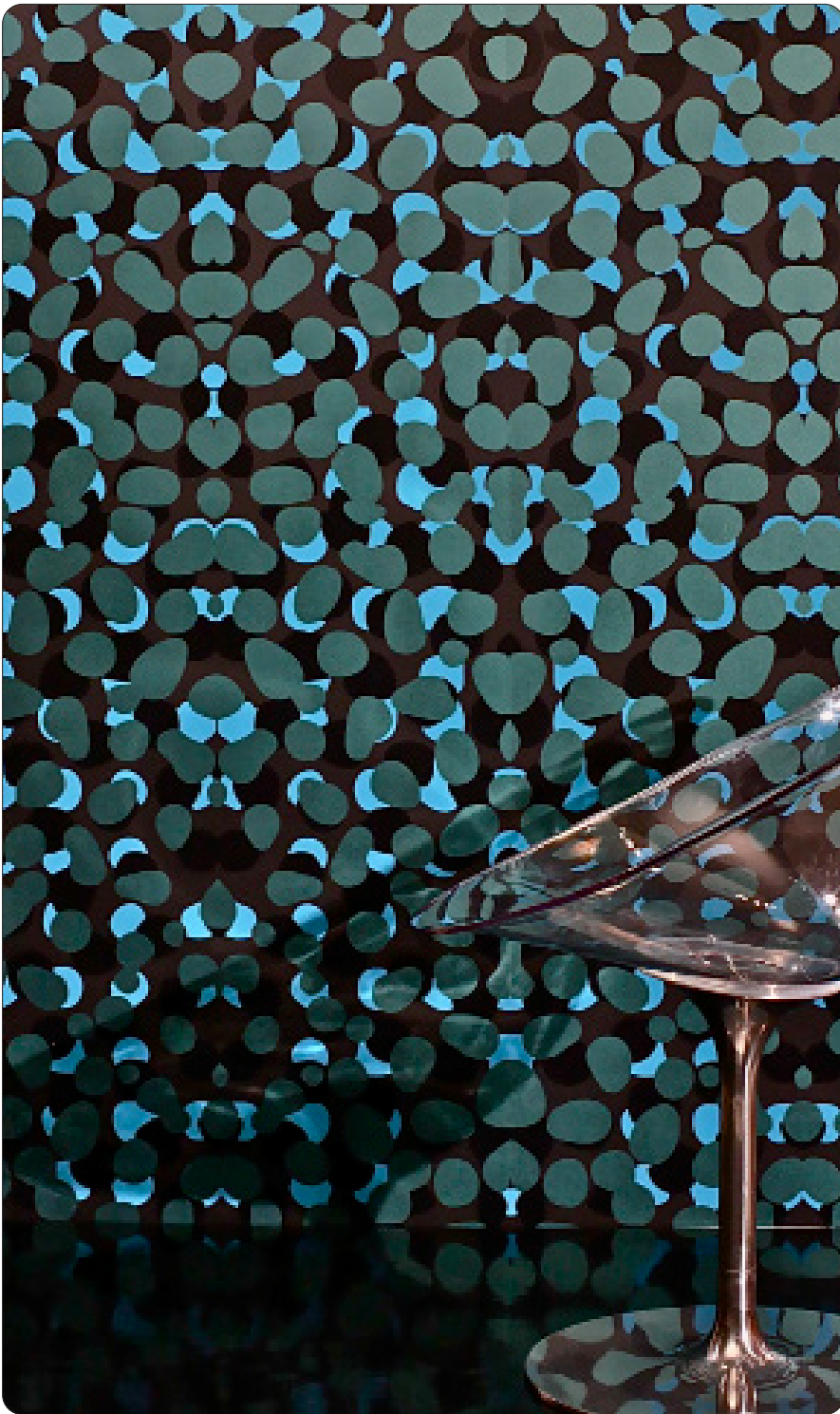


FLAVOR PAPER

sales@flavorpaper.com | flavorpaper.com

OBSCURO

by Kravitz Design



Layers of overlapping ink blots conceal many possible interpretations within Obscuro, another star-worthy collaboration with the cool crew at Kravitz Design. Different patterns emerge on the wall as perception moves with perspective around this one. Inspired by Lenny Kravitz's love for the dense jungles of Brazil and rendered in any color combination you like.

SPECS

ROLL SIZE ————— 27" W x 180" L
PATTERN REPEAT ————— 60.94" /154.79cm
SIDE TO SIDE MATCH ———— STRAIGHT ACROSS
MADE TO ORDER IN USA

LEARN MORE!



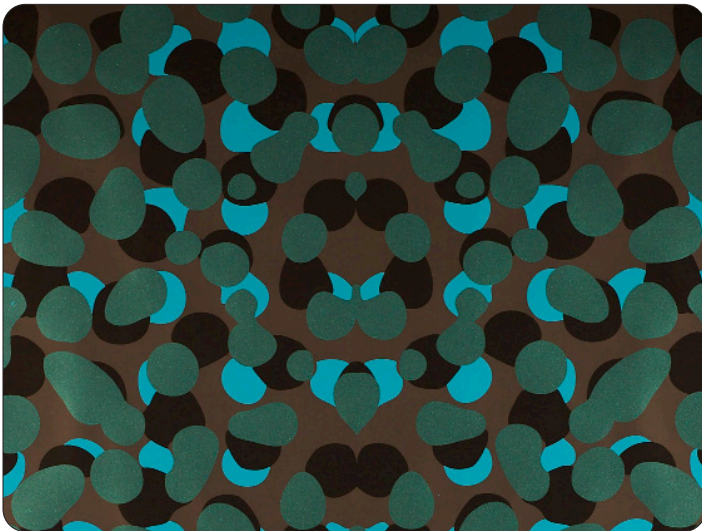


FLAVOR PAPER

sales@flavorpaper.com | flavorpaper.com

OBSCURO

by Kravitz Design



DEEP BLUE SEA

- PRINTING METHOD: HANDSCREEN
- GROUND: TYPE I CLAY COATED EBONY
- BACKING: NONWOVEN FIBER
- WEIGHT: 0.78 oz/sqft
- FIRE RATING: CLASS A, AS PER ASTM E 84 (ADHERED)
- FLAME SPREAD/SMOKE DEVELOPED: 15/205
- ECO: PRINTED WITH WATER BASED INKS (LATEX OR ECO-SOLVENT)
- INSTALLATION: COMES UNTRIMMED | PRO INSTALL RECOMMENDED



ECLAIR

- PRINTING METHOD: HANDSCREEN
- GROUND: TYPE I CLAY COATED BLUSH
- BACKING: NONWOVEN FIBER
- WEIGHT: 0.78 oz/sqft
- FIRE RATING: CLASS A, AS PER ASTM E 84 (ADHERED)
- FLAME SPREAD/SMOKE DEVELOPED: 15/205
- ECO: PRINTED WITH WATER BASED INKS (LATEX OR ECO-SOLVENT)
- INSTALLATION: COMES UNTRIMMED | PRO INSTALL RECOMMENDED



ORE

- PRINTING METHOD: HANDSCREEN
- GROUND: TYPE I MATTE GOLD MYLAR
- BACKING: NONWOVEN FIBER
- WEIGHT: 0.78 oz/sqft
- FIRE RATING: CLASS A, AS PER ASTM E 84 (ADHERED)
- FLAME SPREAD/SMOKE DEVELOPED: 15/205
- ECO: PRINTED WITH WATER BASED INKS (LATEX OR ECO-SOLVENT)
- INSTALLATION: COMES UNTRIMMED | PRO INSTALL RECOMMENDED



RED HOT

- PRINTING METHOD: HANDSCREEN
- GROUND: TYPE I COPPER MYLAR
- BACKING: NONWOVEN FIBER
- WEIGHT: 0.78 oz/sqft
- FIRE RATING: CLASS A, AS PER ASTM E 84 (ADHERED)
- FLAME SPREAD/SMOKE DEVELOPED: 15/205
- ECO: PRINTED WITH WATER BASED INKS (LATEX OR ECO-SOLVENT)
- INSTALLATION: COMES UNTRIMMED | PRO INSTALL RECOMMENDED