



FLAVOR PAPER

sales@flavorpaper.com | flavorpaper.com

NOUVEAU RICHE

by Dan Funderburgh



An inverse print allows us to layer ink as the background, and let the ground material become the elements of the design. In this case, metallic Mylars shine through in chrome, copper and gold to form the random weavings of someone truly blessed. Get yours in any color money can afford.

SPECS

ROLL SIZE ————— 27" W x 180" L

PATTERN REPEAT ————— 27" / 68.58cm

SIDE TO SIDE MATCH ———— STRAIGHT ACROSS

MADE TO ORDER IN USA

LEARN MORE!



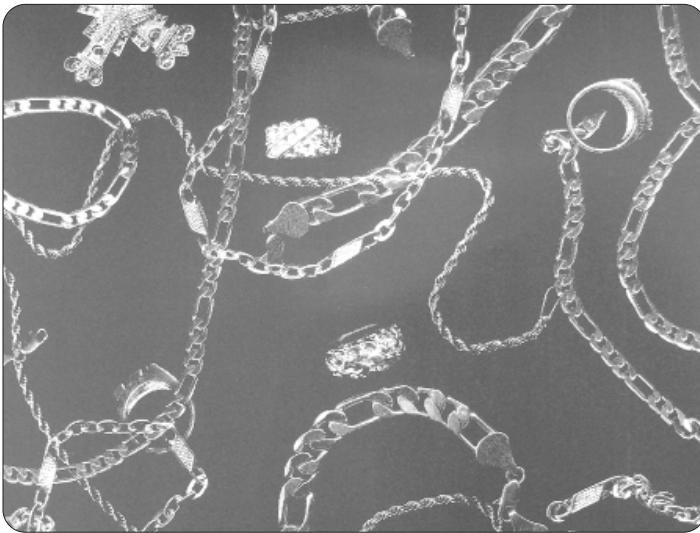


FLAVOR PAPER

sales@flavorpaper.com | flavorpaper.com

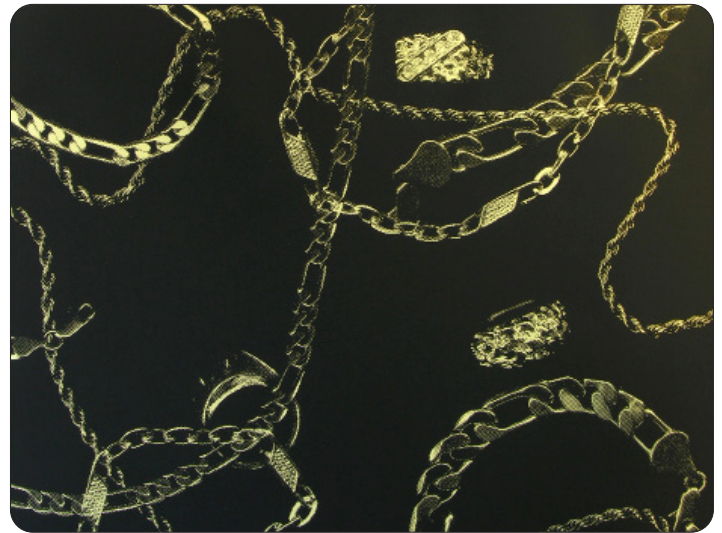
NOUVEAU RICHE

by Dan Funderburgh



GRAPHITE

- PRINTING METHOD: HANDSCREEN
- GROUND: TYPE I CHROME MYLAR
- BACKING: NONWOVEN FIBER
- WEIGHT: 0.78 oz/sqft
- FIRE RATING: CLASS A, AS PER ASTM E 84 (ADHERED)
- FLAME SPREAD/SMOKE DEVELOPED: 15/205
- ECO: PRINTED WITH WATER BASED INKS (LATEX OR ECO-SOLVENT)
- INSTALLATION: COMES UNTRIMMED | PRO INSTALL RECOMMENDED



LICORICE

- PRINTING METHOD: HANDSCREEN
- GROUND: TYPE I BRIGHT GOLD MYLAR
- BACKING: NONWOVEN FIBER
- WEIGHT: 0.78 oz/sqft
- FIRE RATING: CLASS A, AS PER ASTM E 84 (ADHERED)
- FLAME SPREAD/SMOKE DEVELOPED: 15/205
- ECO: PRINTED WITH WATER BASED INKS (LATEX OR ECO-SOLVENT)
- INSTALLATION: COMES UNTRIMMED | PRO INSTALL RECOMMENDED



MONEY GREEN

- PRINTING METHOD: HANDSCREEN
- GROUND: TYPE I BRIGHT GOLD MYLAR
- BACKING: NONWOVEN FIBER
- WEIGHT: 0.78 oz/sqft
- FIRE RATING: CLASS A, AS PER ASTM E 84 (ADHERED)
- FLAME SPREAD/SMOKE DEVELOPED: 15/205
- ECO: PRINTED WITH WATER BASED INKS (LATEX OR ECO-SOLVENT)
- INSTALLATION: COMES UNTRIMMED | PRO INSTALL RECOMMENDED



PENNY

- PRINTING METHOD: HANDSCREEN
- GROUND: TYPE I COPPER MYLAR
- BACKING: NONWOVEN FIBER
- WEIGHT: 0.78 oz/sqft
- FIRE RATING: CLASS A, AS PER ASTM E 84 (ADHERED)
- FLAME SPREAD/SMOKE DEVELOPED: 15/205
- ECO: PRINTED WITH WATER BASED INKS (LATEX OR ECO-SOLVENT)
- INSTALLATION: COMES UNTRIMMED | PRO INSTALL RECOMMENDED