



FLAVOR PAPER

sales@flavorpaper.com | flavorpaper.com

MIRAGE

by Ted



No, you're not hallucinating; this optical phenomenon grows more funkadelic the longer your eyes explore it. Fresh from the Flavor Paper Age of Aquarius archives (thanks, Ted) and reimagined for today's interiors, this geometric pattern is rich with refractions of light and color to reveal palm trees reaching for the sky amongst a myriad of shapes and layers. Depending on how bold and breezy your vibe, we can print Mirage with or without a pronounced palm outline.

SPECS

ROLL SIZE ————— 27" W x 180" L
PATTERN REPEAT ————— 54" /137.16cm
SIDE TO SIDE MATCH ——— HALF DROP
MANUFACTURED IN USA





FLAVOR PAPER

sales@flavorpaper.com | flavorpaper.com

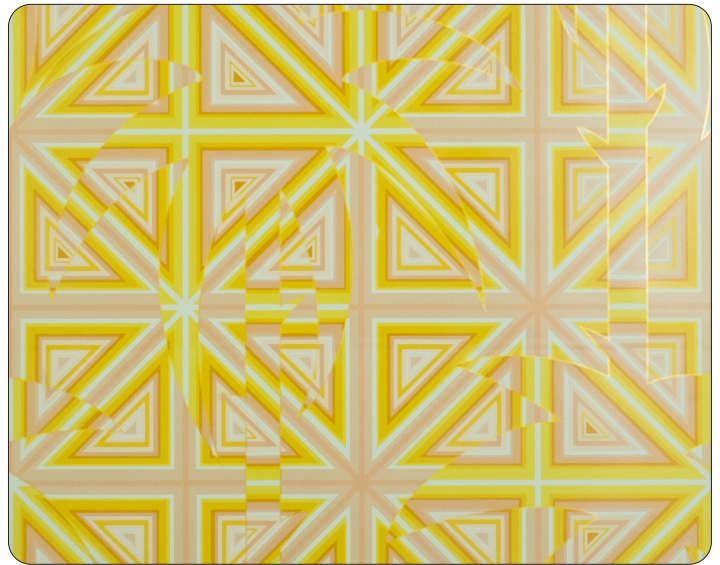
MIRAGE

by Ted



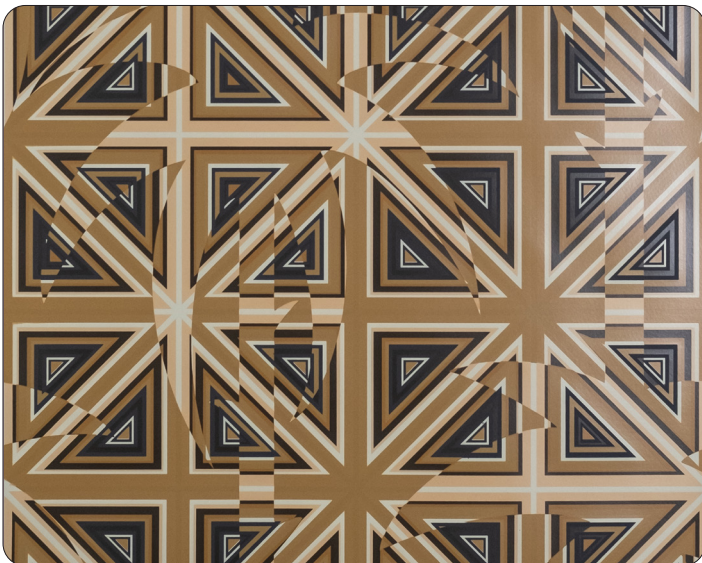
FRESH SQUEEZED

- PRINTING METHOD: HANDSCREEN
- GROUND: TYPE I HOLOGRAPHIC MYLAR
- BACKING: NONWOVEN FIBER
- WEIGHT: 0.78 oz/sqft
- FIRE RATING: CLASS A, AS PER ASTM E 84 (ADHERED)
- FLAME SPREAD/SMOKE DEVELOPED: 15/205
- INSTALLATION: COMES UNTRIMMED | PRO INSTALL RECOMMENDED



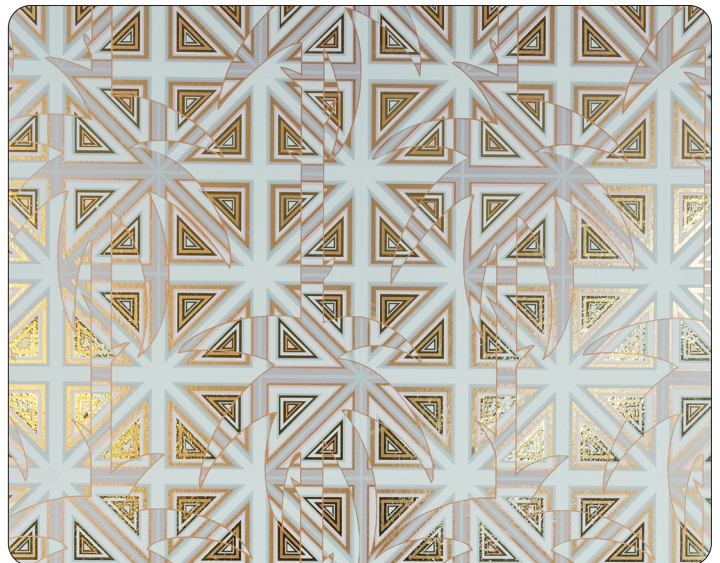
LIMONCELLO

- PRINTING METHOD: HANDSCREEN
- GROUND: TYPE I CLAY COATED OATMEAL
- BACKING: NONWOVEN FIBER
- WEIGHT: 0.78 oz/sqft
- FIRE RATING: CLASS A, AS PER ASTM E 84 (ADHERED)
- FLAME SPREAD/SMOKE DEVELOPED: 15/205
- INSTALLATION: COMES UNTRIMMED | PRO INSTALL RECOMMENDED



ROOT BEER FLOAT

- PRINTING METHOD: HANDSCREEN
- GROUND: TYPE I CLAY COATED GRAY
- BACKING: NONWOVEN FIBER
- WEIGHT: 0.78 oz/sqft
- FIRE RATING: CLASS A, AS PER ASTM E 84 (ADHERED)
- FLAME SPREAD/SMOKE DEVELOPED: 15/205
- INSTALLATION: COMES UNTRIMMED | PRO INSTALL RECOMMENDED



WHITE HEAT

- PRINTING METHOD: HANDSCREEN
- GROUND: TYPE I BRIGHT GOLD MYLAR
- BACKING: NONWOVEN FIBER
- WEIGHT: 0.78 oz/sqft
- FIRE RATING: CLASS A, AS PER ASTM E 84 (ADHERED)
- FLAME SPREAD/SMOKE DEVELOPED: 15/205
- INSTALLATION: COMES UNTRIMMED | PRO INSTALL RECOMMENDED