

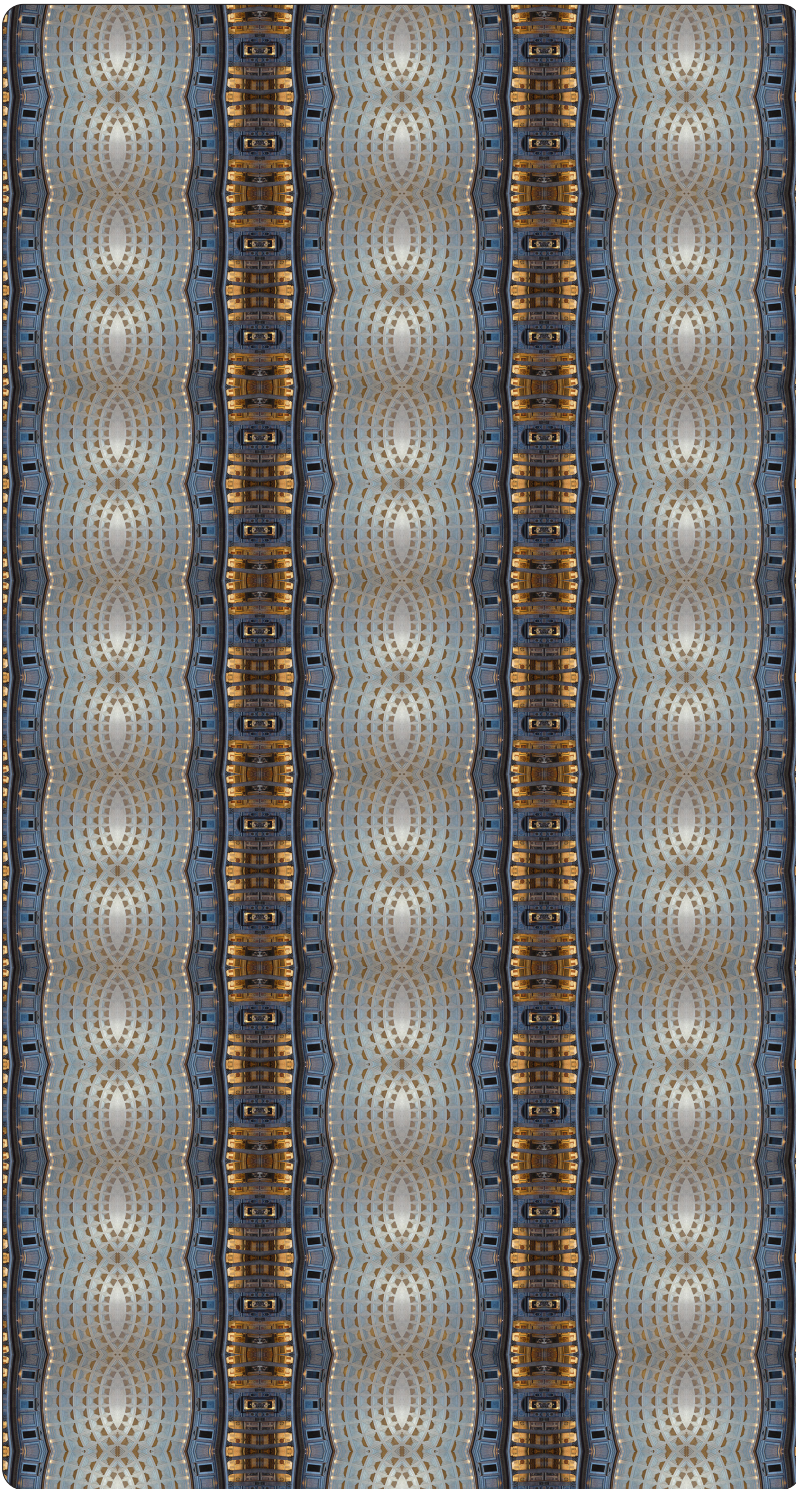


FLAVOR PAPER

sales@flavorpaper.com | flavorpaper.com

LIGHT OF ROME

by David Nosanchuk



Designed by David Nosanchuk, Light of Rome is a retranslation of the interior of the Roman Era Pantheon through the manipulation of a single image of the light emitting oculus and lower interior band of apses.

From the David Nosanchuk for Flavor Paper “Super Series” collection of wallpaper based on photographs from Rome and New York 2013 – a contemporary translation of art and architecture into a narrative of luminosity and scale.

GROUND MENU

TYPE II ECO TEXTURED MATTE

- PRINTING METHOD: DIGITAL
- BACKING: OSNABURG
- WEIGHT: 20 OZ/LINEAL YARD
- FIRE RATING: CLASS A, AS PER ASTM E 84 (ADHERED)
- FLAME SPREAD/SMOKE DEVELOPED: 15/205
- ECO: MINIMUM 31% POST-CONSUMER CONTENT
- INSTALLATION: UNTRIMMED | PRO INSTALL RECOMMENDED

TYPE I ECO SMOOTH MATTE

- PRINTING METHOD: DIGITAL
- BACKING: NONWOVEN FIBER
- WEIGHT: 14 OZ/LINEAL YARD
- FIRE RATING: CLASS A, AS PER ASTM E 84 (ADHERED)
- FLAME SPREAD/SMOKE DEVELOPED: 15/205
- ECO: NO OZONE DEPLETING CHEMICALS
- INSTALLATION: UNTRIMMED | PRO INSTALL RECOMMENDED

SPECS

ROLL SIZE _____ W 52” x H 100”, 124”, OR CUSTOM HEIGHT

PATTERN REPEAT _____ 3” /7.62cm

SIDE TO SIDE MATCH _____ STRAIGHT ACROSS

MADE OT ORDER IN USA

LEARN MORE!

