



FLAVOR PAPER

sales@flavorpaper.com | flavorpaper.com

IRIS

by Ted, Jon Sherman



This Ted original clearly celebrates Van Gogh's floral muse at a super-sized scale. The detail in the flowers are amazing, but the real joy comes when the pattern spreads out on the wall and forms scallops of blossoms across the field of leaves. Iris is simply brilliant!

P.S. The Flavor featured in our maquette is a custom color we created for the former Iris restaurant in NOLA. Even though it's not on our regular menu, we can cook it up if you desire.

## SPECS

ROLL SIZE ————— 27" W x 180" L  
PATTERN REPEAT ————— 49.06" /124.61cm  
SIDE TO SIDE MATCH ——— HALF DROP  
**MADE TO ORDER IN USA**

LEARN MORE!







FLAVOR PAPER

sales@flavorpaper.com | flavorpaper.com

IRIS

by Ted, Jon Sherman



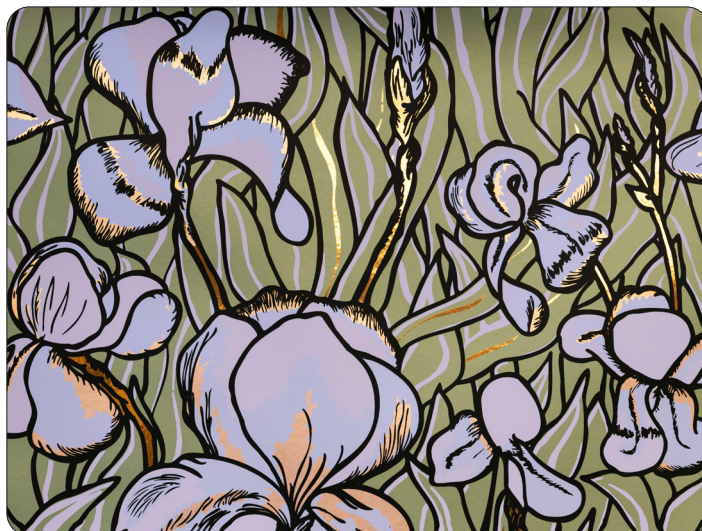
## MALTA

- PRINTING METHOD: HANDSCREEN
- GROUND: TYPE I CLAY COATED BLUSH
- BACKING: NONWOVEN FIBER
- WEIGHT: 0.78 oz/sqft
- FIRE RATING: CLASS A, AS PER ASTM E 84 (ADHERED)
- FLAME SPREAD/SMOKE DEVELOPED: 15/205
- ECO: PRINTED WITH WATER BASED INKS (LATEX OR ECO-SOLVENT)
- INSTALLATION: COMES UNTRIMMED | PRO INSTALL RECOMMENDED



## ROSE WATER

- PRINTING METHOD: HANDSCREEN
- GROUND: TYPE I BRIGHT GOLD MYLAR
- BACKING: NONWOVEN FIBER
- WEIGHT: 0.78 oz/sqft
- FIRE RATING: CLASS A, AS PER ASTM E 84 (ADHERED)
- FLAME SPREAD/SMOKE DEVELOPED: 15/205
- ECO: PRINTED WITH WATER BASED INKS (LATEX OR ECO-SOLVENT)
- INSTALLATION: COMES UNTRIMMED | PRO INSTALL RECOMMENDED



## WASABI

- PRINTING METHOD: HANDSCREEN
- GROUND: TYPE I BRIGHT GOLD MYLAR
- BACKING: NONWOVEN FIBER
- WEIGHT: 0.78 oz/sqft
- FIRE RATING: CLASS A, AS PER ASTM E 84 (ADHERED)
- FLAME SPREAD/SMOKE DEVELOPED: 15/205
- ECO: PRINTED WITH WATER BASED INKS (LATEX OR ECO-SOLVENT)
- INSTALLATION: COMES UNTRIMMED | PRO INSTALL RECOMMENDED