



FLAVOR PAPER

sales@flavorpaper.com | flavorpaper.com

FISHNET

by Jon Sherman



This cheeky play on scale and perspective looks like a simple fishnet pattern from across the room, but when you approach the pattern it reveals itself as ...

fishnets! Ladies legs in various styles of fishnets that is. With connecting diamonds featuring bustiers and laced panties. Sexy and fun, Fishnet can be printed as a super-sized inverse if the original scale is too subtle.

SPECS

ROLL SIZE ————— 27" W x 180" L
PATTERN REPEAT ————— 18" / 45.72cm
SIDE TO SIDE MATCH ——— STRAIGHT ACROSS
MADE TO ORDER IN USA

LEARN MORE!





FLAVOR PAPER

sales@flavorpaper.com | flavorpaper.com

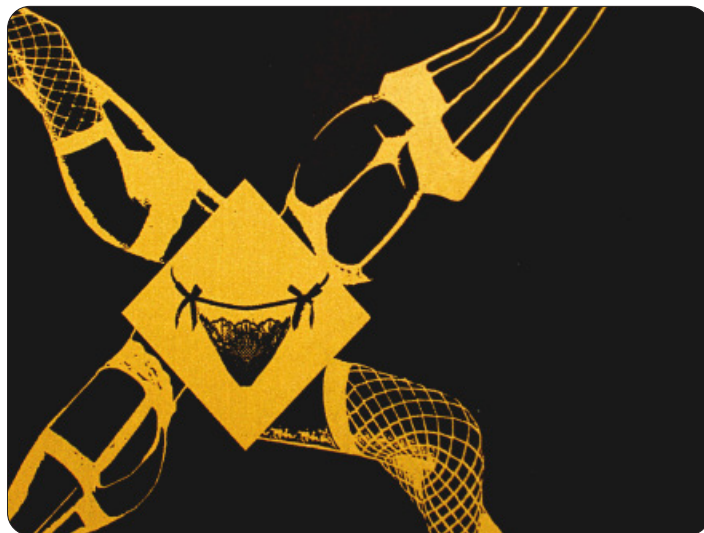
FISHNET

by Jon Sherman



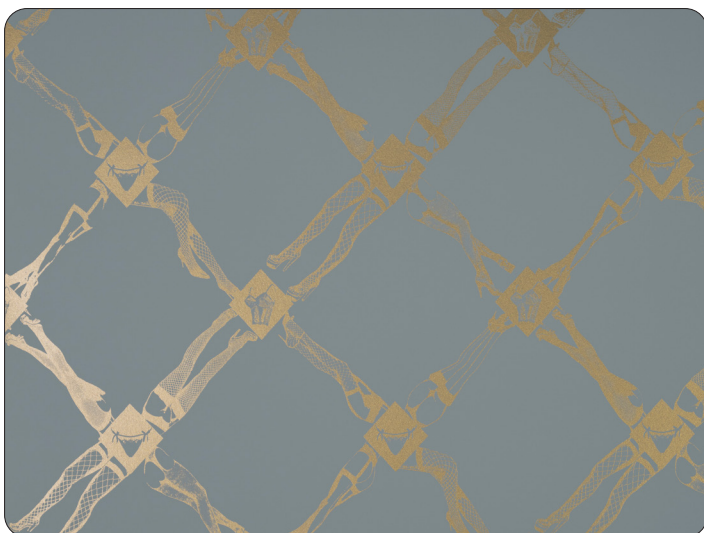
BOUDOIR

- PRINTING METHOD: HANDSCREEN
- GROUND: TYPE I BLUSH CLAY COATED
- BACKING: NONWOVEN FIBER
- WEIGHT: 0.78 oz/sqft
- FIRE RATING: CLASS A, AS PER ASTM E 84 (ADHERED)
- FLAME SPREAD/SMOKE DEVELOPED: 15/205
- ECO: PRINTED WITH WATER BASED INKS (LATEX OR ECO-SOLVENT)
- INSTALLATION: COMES UNTRIMMED | PRO INSTALL RECOMMENDED



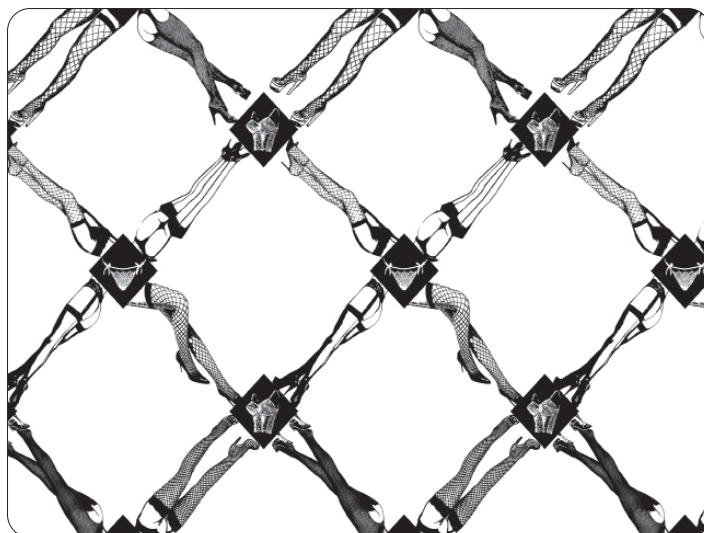
GOLD

- PRINTING METHOD: HANDSCREEN
- GROUND: TYPE I BLACK MYLAR
- BACKING: NONWOVEN FIBER
- WEIGHT: 0.78 oz/sqft
- FIRE RATING: CLASS A, AS PER ASTM E 84 (ADHERED)
- FLAME SPREAD/SMOKE DEVELOPED: 15/205
- ECO: PRINTED WITH WATER BASED INKS (LATEX OR ECO-SOLVENT)
- INSTALLATION: COMES UNTRIMMED | PRO INSTALL RECOMMENDED



LACEY UNDERALL

- PRINTING METHOD: HANDSCREEN
- GROUND: TYPE I SAGE CLAY COATED
- BACKING: NONWOVEN FIBER
- WEIGHT: 0.78 oz/sqft
- FIRE RATING: CLASS A, AS PER ASTM E 84 (ADHERED)
- FLAME SPREAD/SMOKE DEVELOPED: 15/205
- ECO: PRINTED WITH WATER BASED INKS (LATEX OR ECO-SOLVENT)
- INSTALLATION: COMES UNTRIMMED | PRO INSTALL RECOMMENDED



LICORICE

- PRINTING METHOD: HANDSCREEN
- GROUND: TYPE I WHITE VINYL
- BACKING: NONWOVEN FIBER
- WEIGHT: 0.78 oz/sqft
- FIRE RATING: CLASS A, AS PER ASTM E 84 (ADHERED)
- FLAME SPREAD/SMOKE DEVELOPED: 15/205
- ECO: PRINTED WITH WATER BASED INKS (LATEX OR ECO-SOLVENT)
- INSTALLATION: COMES UNTRIMMED | PRO INSTALL RECOMMENDED