



FLAVOR PAPER

sales@flavorpaper.com | flavorpaper.com

FEROZ

by Kravitz Design



Inspired by a shared love for Brazil, the Tropicalismo collaboration with the team over at Kravitz Design hit a high note on Feroz. The stylized jungle flora hides monkeys and Jaguars peering out from their natural habitat. Multiple overlapping transparent inks allow us to get a dozen distinct colors from only 4 screens with Jungle Fever, or use a combination of metallics and neutrals like Ore for urbane appeal. However this is printed for you, it will be a stunner!

## SPECS

ROLL SIZE ————— 27" W x 180" L

PATTERN REPEAT ————— 54" / 137.16cm

SIDE TO SIDE MATCH ——— HALF DROP

**MADE TO ORDER IN USA**

LEARN MORE!



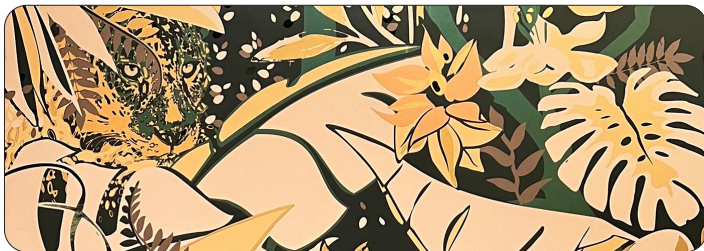


FLAVOR PAPER

sales@flavorpaper.com | flavorpaper.com

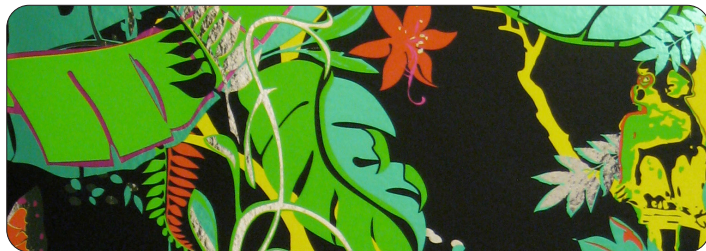
FEROZ

by Kravitz Design



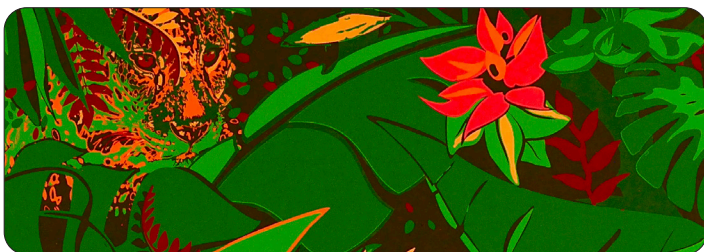
## BAHIA

- PRINTING METHOD: HANDSCREEN
- GROUND: TYPE I BLACK MYLAR
- BACKING: NONWOVEN FIBER
- WEIGHT: 0.78 oz/sqft
- FIRE RATING: CLASS A, AS PER ASTM E 84 (ADHERED)
- FLAME SPREAD/SMOKE DEVELOPED: 15/205
- ECO: PRINTED WITH WATER BASED INKS (LATEX OR ECO-SOLVENT)
- INSTALLATION: COMES UNTRIMMED | PRO INSTALL RECOMMENDED



## BOOYAH

- PRINTING METHOD: HANDSCREEN
- GROUND: TYPE I CHROME MYLAR
- BACKING: NONWOVEN FIBER
- WEIGHT: 0.78 oz/sqft
- FIRE RATING: CLASS A, AS PER ASTM E 84 (ADHERED)
- FLAME SPREAD/SMOKE DEVELOPED: 15/205
- ECO: PRINTED WITH WATER BASED INKS (LATEX OR ECO-SOLVENT)
- INSTALLATION: COMES UNTRIMMED | PRO INSTALL RECOMMENDED



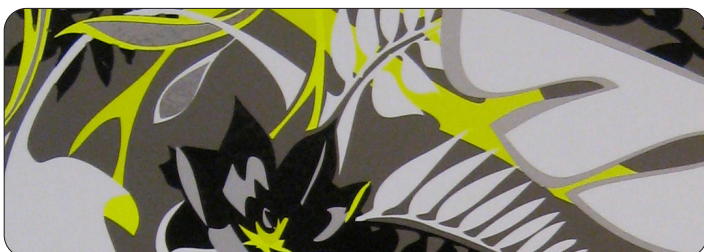
## JUNGLE FEVER

- PRINTING METHOD: HANDSCREEN
- GROUND: TYPE I CLAY COATED EBONY
- BACKING: NONWOVEN FIBER
- WEIGHT: 0.78 oz/sqft
- FIRE RATING: CLASS A, AS PER ASTM E 84 (ADHERED)
- FLAME SPREAD/SMOKE DEVELOPED: 15/205
- ECO: PRINTED WITH WATER BASED INKS (LATEX OR ECO-SOLVENT)
- INSTALLATION: COMES UNTRIMMED | PRO INSTALL RECOMMENDED



## ORE

- PRINTING METHOD: HANDSCREEN
- GROUND: TYPE I MATTE GOLD MYLAR
- BACKING: NONWOVEN FIBER
- WEIGHT: 0.78 oz/sqft
- FIRE RATING: CLASS A, AS PER ASTM E 84 (ADHERED)
- FLAME SPREAD/SMOKE DEVELOPED: 15/205
- ECO: PRINTED WITH WATER BASED INKS (LATEX OR ECO-SOLVENT)
- INSTALLATION: COMES UNTRIMMED | PRO INSTALL RECOMMENDED



## YELLOW FURY

- PRINTING METHOD: HANDSCREEN
- GROUND: TYPE I CHROME VINYL
- BACKING: NONWOVEN FIBER
- WEIGHT: 0.78 oz/sqft
- FIRE RATING: CLASS A, AS PER ASTM E 84 (ADHERED)
- FLAME SPREAD/SMOKE DEVELOPED: 15/205
- ECO: PRINTED WITH WATER BASED INKS (LATEX OR ECO-SOLVENT)
- INSTALLATION: COMES UNTRIMMED | PRO INSTALL RECOMMENDED