

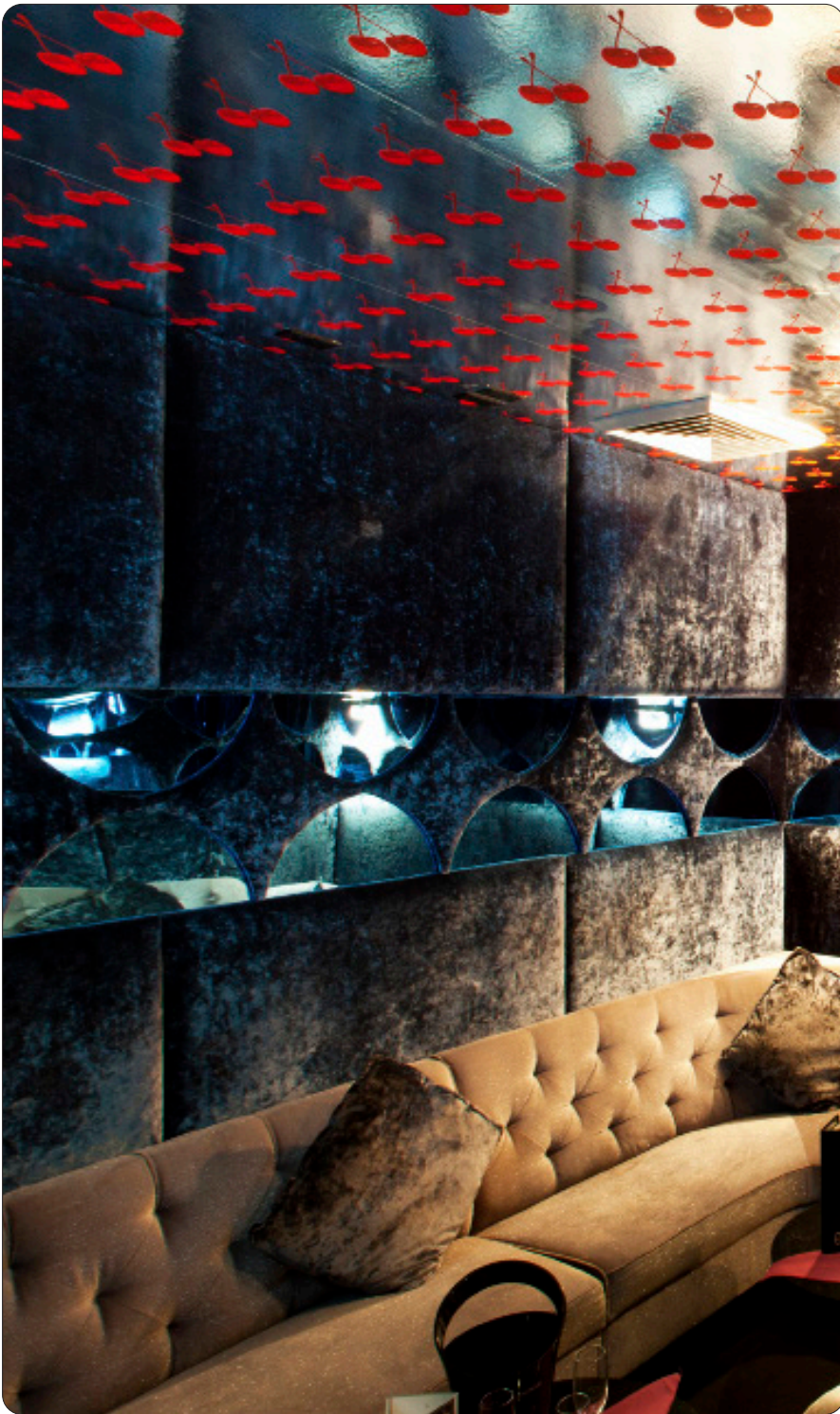


FLAVOR PAPER

sales@flavorpaper.com | flavorpaper.com

# CHERRY FOREVER

by Michael Angelo



Talk about a tasty Flavor... designed with Michael Angelo of Wonderland Beauty Parlor, this pop art classic comes with optional scratch and sniff scent! Your cherries can indeed smell like cherries. Cherry Forever can be printed with a background screen to get a look like Yellow Chrome or on any of our standard grounds. If you're craving a different color or scent, please give us a ring to discuss options.

## SPECS

ROLL SIZE ————— 27" W x 180" L  
PATTERN REPEAT ————— 14" / 35.56cm  
SIDE TO SIDE MATCH ——— STRAIGHT ACROSS  
**MADE TO ORDER IN USA**

LEARN MORE!





FLAVOR PAPER

sales@flavorpaper.com | flavorpaper.com

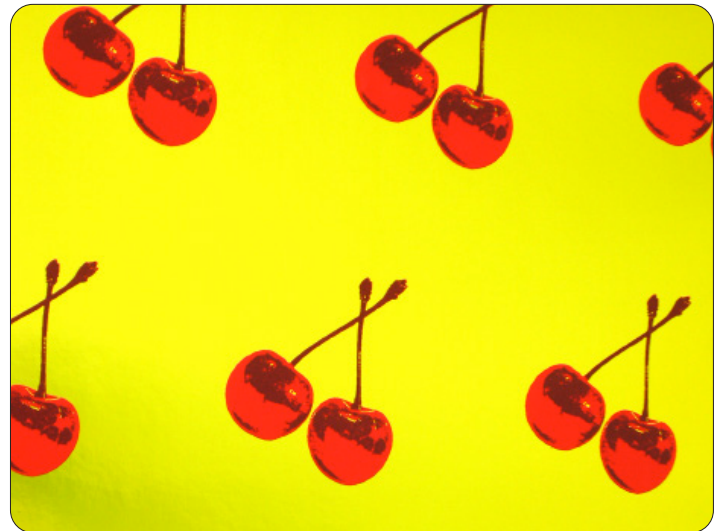
# CHERRY FOREVER

by Michael Angelo



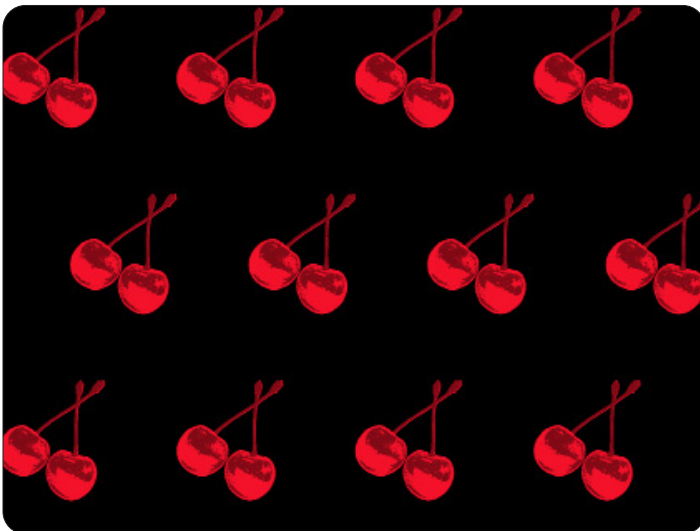
## SCENTED BLUSH

- PRINTING METHOD: HANDSCREEN
- GROUND: TYPE I CLAY COATED BLUSH
- BACKING: NONWOVEN FIBER
- WEIGHT: 0.78 oz/sqft
- FIRE RATING: CLASS A, AS PER ASTM E 84 (ADHERED)
- FLAME SPREAD/SMOKE DEVELOPED: 15/205
- ECO: PRINTED WITH WATER BASED INKS (LATEX OR ECO-SOLVENT)
- INSTALLATION: COMES UNTRIMMED | PRO INSTALL RECOMMENDED



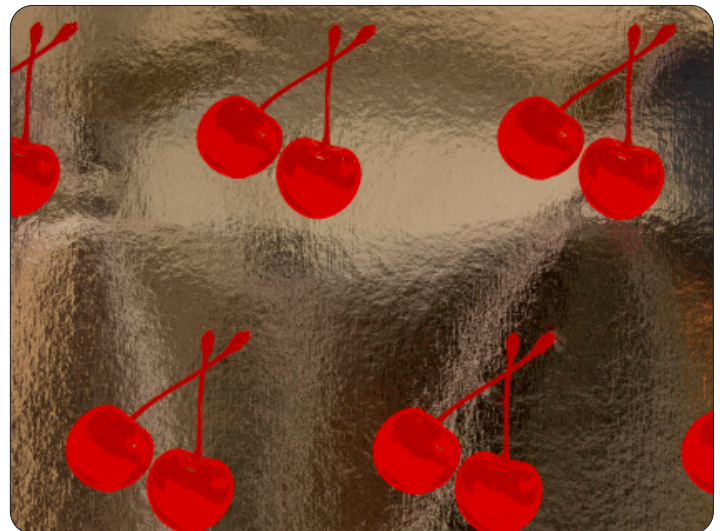
## SCENTED YELLOW CHROME

- PRINTING METHOD: HANDSCREEN
- GROUND: TYPE I CHROME MYLAR
- BACKING: NONWOVEN FIBER
- WEIGHT: 0.78 oz/sqft
- FIRE RATING: CLASS A, AS PER ASTM E 84 (ADHERED)
- FLAME SPREAD/SMOKE DEVELOPED: 15/205
- ECO: PRINTED WITH WATER BASED INKS (LATEX OR ECO-SOLVENT)
- INSTALLATION: COMES UNTRIMMED | PRO INSTALL RECOMMENDED



## UNSCENTED BLACK

- PRINTING METHOD: HANDSCREEN
- GROUND: TYPE I BLACK MYLAR
- BACKING: NONWOVEN FIBER
- WEIGHT: 0.78 oz/sqft
- FIRE RATING: CLASS A, AS PER ASTM E 84 (ADHERED)
- FLAME SPREAD/SMOKE DEVELOPED: 15/205
- ECO: PRINTED WITH WATER BASED INKS (LATEX OR ECO-SOLVENT)
- INSTALLATION: COMES UNTRIMMED | PRO INSTALL RECOMMENDED



## UNSCENTED CHROME

- PRINTING METHOD: HANDSCREEN
- GROUND: TYPE I CHROME MYLAR
- BACKING: NONWOVEN FIBER
- WEIGHT: 0.78 oz/sqft
- FIRE RATING: CLASS A, AS PER ASTM E 84 (ADHERED)
- FLAME SPREAD/SMOKE DEVELOPED: 15/205
- ECO: PRINTED WITH WATER BASED INKS (LATEX OR ECO-SOLVENT)
- INSTALLATION: COMES UNTRIMMED | PRO INSTALL RECOMMENDED