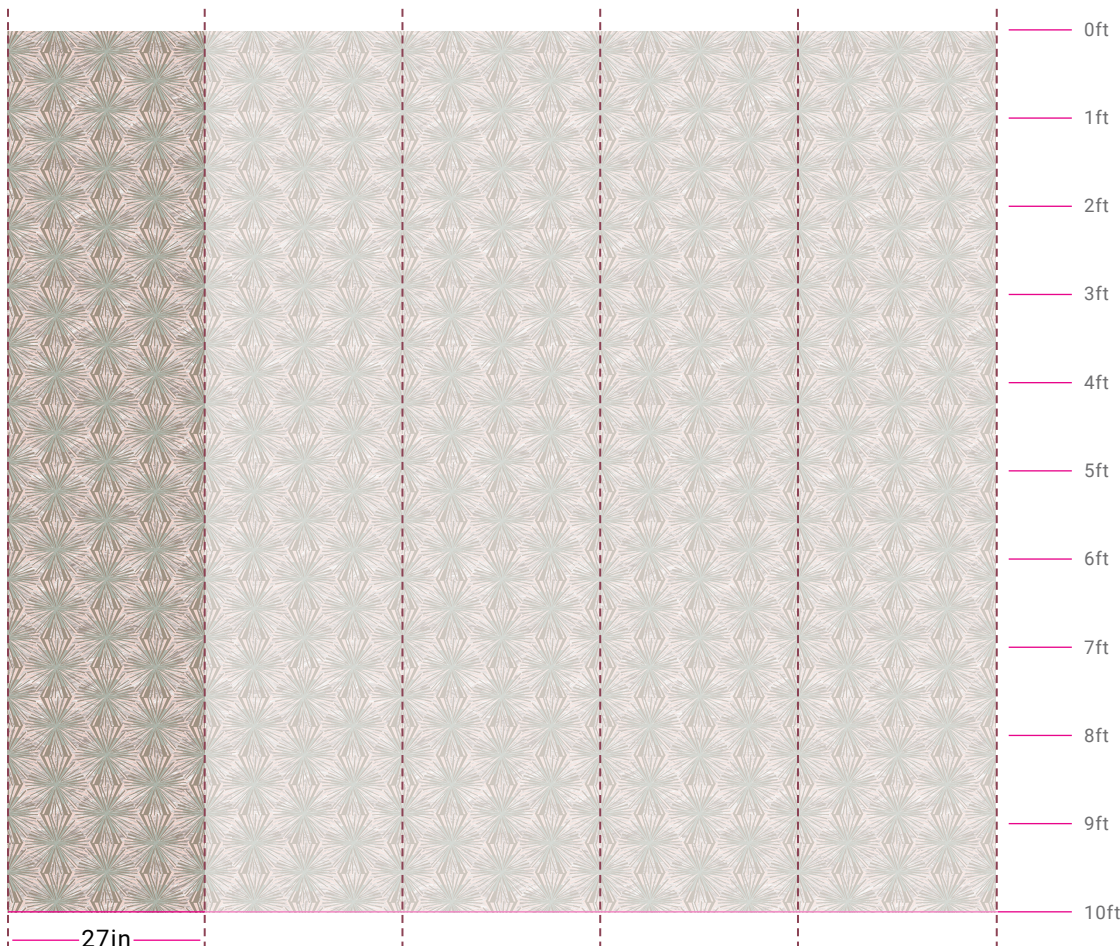


# METEOR FLOWER

Starlet on Silver Ponyskin Foil

Designed by Jane Blevin



FURTHER DETAILS:



BM 2102-70

BM AF-155

BM 2138-50

BM 628

Benjamin Moore colors selected from the design

10ft ceiling height shown for illustrative purposes

Item Number:	3294	Lead Time:	3 - 4 weeks
Minimum Order:	3 Rolls (45ft)	Fire Rating:	ASTM E84 Class A
Order Increments:	1 Roll (15ft)	Maintenance:	Wipe Gently
Roll Length:	Triple (45ft), double (30ft), or single rolls (15ft)	Seaming:	V1 - Minimal visibility
	Based on order quantity and project cut sizes	Eco:	Printed with water based inks
Roll Width:	27in (29in Untrimmed)	Customization:	Inquire about substrates and color options
Repeat:	Straight Match (8in V)	Colorways:	Additional colorways available

FLAVOR PAPER







Artist Jane Blevin's Meteor Flower resembles a vintage Curtis Jeré sculpture or a geometric firework with imperfectly painted lines inspired by Sonia Delaunay's happy hand. The bursting shapes bounce across the wall with a wonderfully human vibrato due to shimmering metallics uniquely catching light.

Starlet is a luxurious colorway based on dried flowers with light muted taupe, slate blue, and pale pink brushstrokes printed on a silver ponyskin textured foil.

Jane Blevin is a true artist - fashion designer, dancer, textile designer, dramatist, neo-burlesque pioneer and an accomplished screen printer. Jane considers the art of printing wallpaper to be its own kind of "dance performance, with all the grace and jitters." Her unique metallic textiles were highly influenced by two of the most iconic names in Los Angeles interior design, Phyllis Morris and Tony Duquette.

Handscreened and made-to-order in Brooklyn, NY.