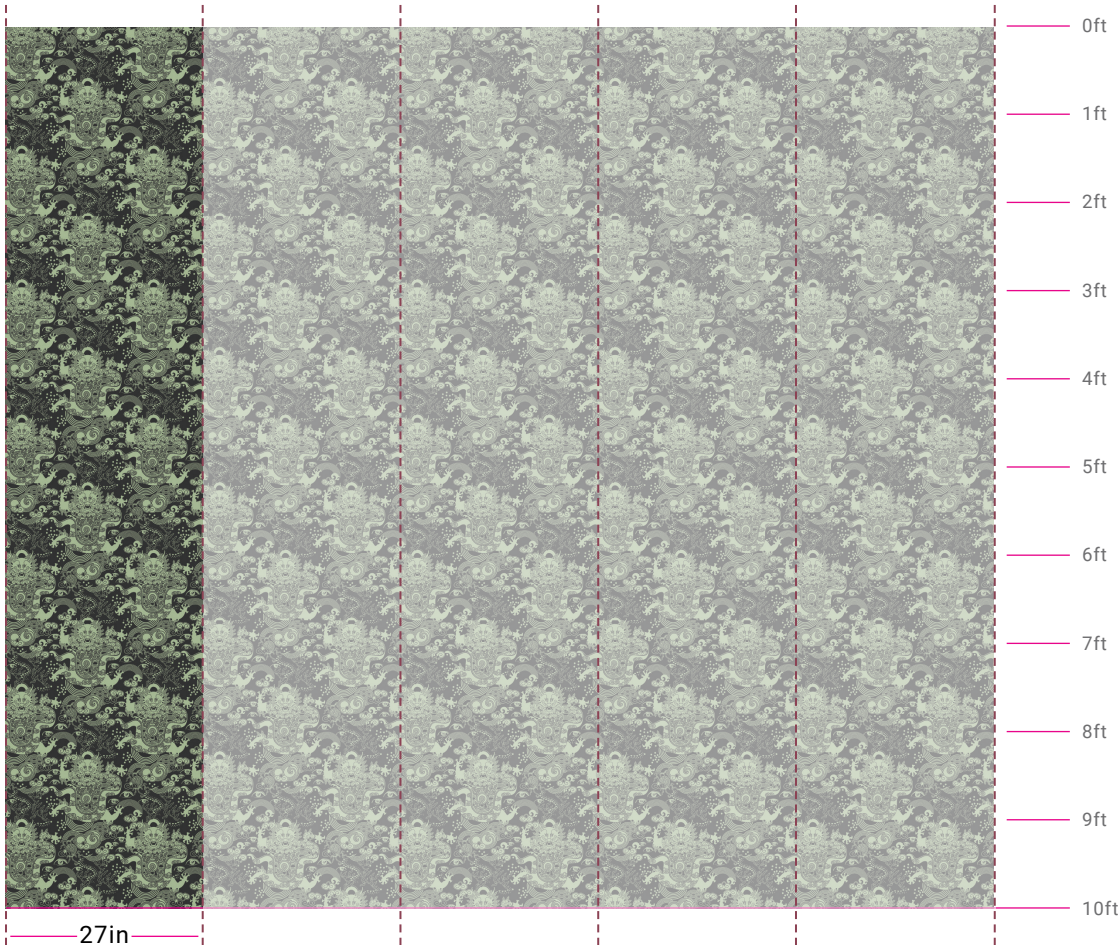


CELESTIAL DRAGON

Super Green on Ebony Clay Coated Paper

Designed by Karen Hsu



FURTHER DETAILS:



BM AF-450

BM 2132-10

Benjamin Moore colors selected from the design

10ft ceiling height shown for illustrative purposes

Item Number:	3065	Lead Time:	3 - 4 weeks
Minimum Order:	3 Rolls (45ft)	Fire Rating:	ASTM E84 Class A
Order Increments:	1 Roll (15ft)	Maintenance:	Wipe Gently
Roll Length:	Triple (45ft), double (30ft), or single rolls (15ft) Cut based on order quantity	Seaming:	V1 - Minimal visibility
Roll Width:	27in (29in Untrimmed)	Eco:	Printed with water based inks, FSC Certified
Repeat:	Straight Match (18.5in V)	Customization:	Inquire about substrates and color options
		Colorways:	Additional colorways available

FLAVOR PAPER

